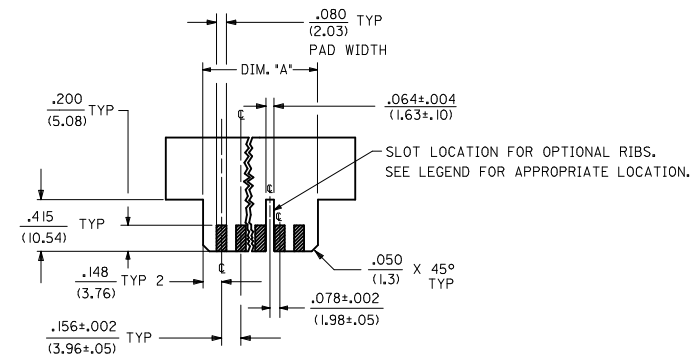
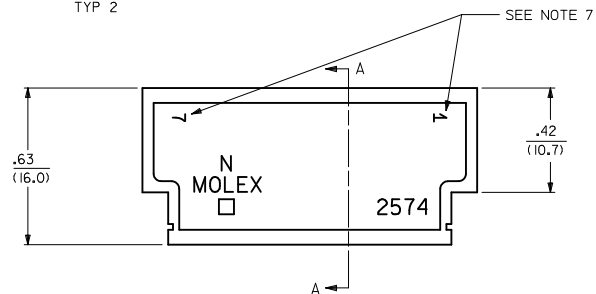
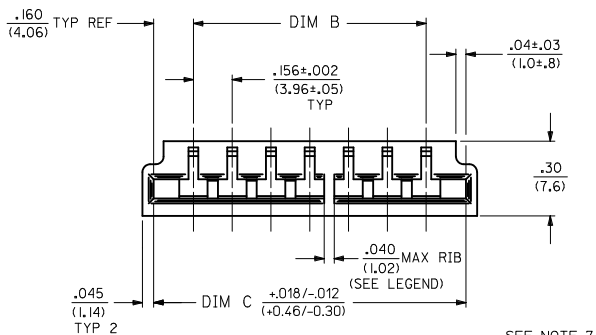
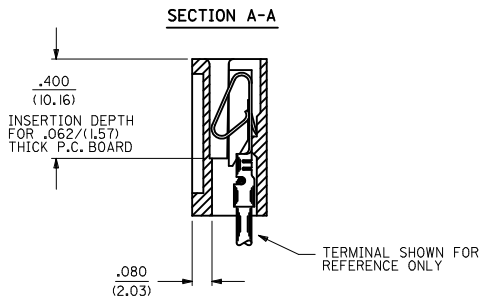


- NOTES:
 1. MATERIAL: UL 94V-0 NYLON, GLOW WIRE CAPABLE.
 2. FINISH: N/A
 3. THIS PRODUCT CONFORMS TO MOLEX PROD. SPEC. PS-08-50.
 4. PACKAGING: BULK, PER PK-2574-001
 5. CONNECTOR TO BE USED WITH CRIMP TERMINALS:
 2478-*w*: 18-24 GA. WIRE, .110/(2.79) MAX INSULATION DIAMETER.
 2578-*w*: 22-26 GA. WIRE, .065/(1.65) MAX INSULATION DIAMETER.
 6. DIMENSIONS GIVEN ACROSS CENTERLINES ARE SYMMETRICAL ABOUT THOSE CENTERLINES WITHIN ONE HALF THE TOTAL TOLERANCE.
 7. PARTS LESS THAN 7 CIRCUITS ARE TO INDICATE ONLY CIRCUIT NO. 1. ALL OTHERS ARE TO IDENTIFY BOTH THE FIRST AND LAST CIRCUITS.
 8. THIS PART CONFORMS TO CLASS B REQUIREMENTS OF COSMETIC SPECIFICATION PS-45499-002.



RECOMMENDED CARD LAYOUT
SCALE 2:1



2574 - N * * BK A

NO. OF CIRCUITS

UL 94V-0 NYLON

COLOR CODE
BK=BLACK

OPTION CODE

CODE	MOUNTING EARS	CHAMFERED SLOT	PCB THK	MOUNTING HOLES
A	NO	NO	.062	NO

RIB LOCATION CODE (BETWEEN CKTS)

- 1 = NONE
- 2 = 2-3
- 3 = 3-4
- 4 = 5-6
- 5 = 3-4, 5-6
- 6 = 4-5, 7-8
- 7 = 5-6, 8-9
- 8 = 5-6, 10-11
- 9 = 4-5, 7-8, 11-12
- 10 = 5-6, 10-11, 14-15
- 11 = 5-6, 10-11, 15-16
- 12 = 5-6, 11-12, 16-17
- 13 = 5-6, 11-12, 17-18
- 14 = 4-5, 7-8, 11-12, 15-16
- 15 = 4-5, 8-9, 12-13, 16-17, 20-21
- 16 = 5-6, 11-12, 18-19

2574-NA*					
PART NO.	ENG. NO. (SUFFIX ONLY)	NO. OF CKTS	DIM A	DIM B	DIM C
09-01-6229	-22A12BKA	22	3.562 (90.47)	3.276±.011 (83.21±0.25)	3.596 (91.34)

ADD PKG. SPEC. EC NO. UCF2012-3660 DRAWN BY DRANKIPPER 2012/05/10 CHECKED BY CHYDABANDERSON 2012/05/10 APPROVED BY APPR:FSMTH 2012/05/12	QUALITY SYMBOLS	GENERAL TOLERANCES (UNLESS SPECIFIED)	DIMENSION STYLE	SCALE	DESIGN UNITS	THIRD ANGLE PROJECTION
	▽=0	4 PLACES ± mm ± INCH	IN/MM	4:1	INCH	☉
	▽=0	3 PLACES ± .010	DATE	DATE	DATE	DATE
	▽=0	2 PLACES ± 0.25 ± .015	ADERR 2005/06/13	FSMITH 2005/06/14	DATE	DATE
	1 PLACE ± 0.36 ± .015	DATE	DATE	DATE	DATE	
	0 PLACE ±	DATE	DATE	DATE	DATE	
	ANGULAR ±1/2°	DRAFT WHERE APPLICABLE MUST REMAIN WITHIN DIMENSIONS	MATERIAL NO.	SEE CHART	DOCUMENT NO.	SHEET NO.
			SD-2574-001	SD-2574-001	SD-2574-001	1 OF 1

THIS DRAWING CONTAINS INFORMATION THAT IS PROPRIETARY TO MOLEX INCORPORATED AND SHOULD NOT BE USED WITHOUT WRITTEN PERMISSION