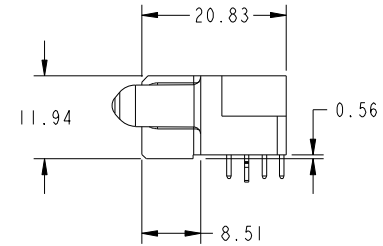
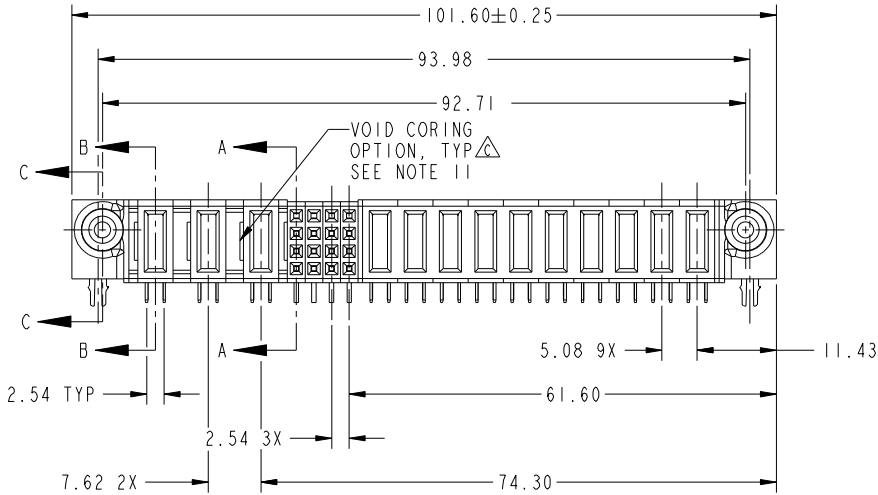


Tous droits strictement reserves. Reproduction ou communication a des tiers interdite sous quelque forme que ce soit sans autorisation écrite du propriétaire. Propriete de c FCI. Droits de reproduction FCI.

All rights strictly reserved. Reproduction or issue to third parties in any form whatever is not permitted without written authority from the proprietor. Property of FCI. Copyright FCI.



PRODUCT No.	ROWS	POWER			SIGNAL			POWER										E1		
		E2	P13	P12	P11	4	3	2	1	P10	P9	P8	P7	P6	P5	P4	P3		P2	P1
51915-003-- NOTE:2	D C B A		PC	PC	PA	H G F E	H G F E	H G F E	H G F E	PC	PC	PC	PC	PC	PC	PC	PC	PC	PC	



CODE	DIM "M" MATING LENGTH	CONTACT TYPE
E	[N/A]	SIGNAL
F	[N/A]	SIGNAL
G	[N/A]	SIGNAL
H	[N/A]	SIGNAL
PA	[1.07]	POWER
PC	[2.34]	POWER
HA	[N/A]	HOLD-DOWN

mat'l code				SEE NOTE		tolerances unless otherwise specified		CUSTOMER		FCI	
ltr	ecn no.	dr	date	linear	0.X ±0.5	projection	COPY		www.fciconnect.com		
A	V12519	JWS	***	angles	0.XX ±0.25		title		10P + 16S + 3ACP		
B	DG05-0353	CS	09/26/05		0.XXX ±0.10		RIGHT ANGLE SOLDER RECEPTACLE				
C	DG07-0498	JW	09/15/08		0° +2°		product family		PwrBlade	code	
				dr	J. SHAFFER		11/11/01	size		dwg no	213
				enrg	E. TREECE	11/11/01	scale		A	1 of 3	
				chr	E. TREECE	11/11/01	1:1		51915-003		
				appd	E. TREECE	11/11/01					
sheet index	revision sheet	C	C	C					cage code 22526		
1	2	3									

Pro/E

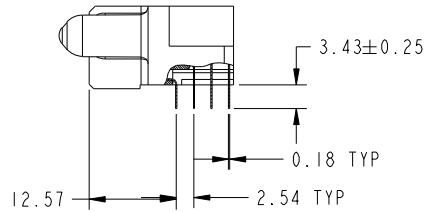
cage code 22526

Tous droits strictement reserves. Reproduction ou communication a des tiers interdite sous quelque forme que ce soit sans autorisation écrite du propriétaire. Propriete de c FCI. Droits de reproduction FCI.

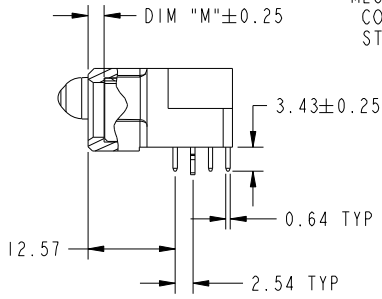


All rights strictly reserved. Reproduction or issue to third parties in any form whatever is not permitted without written authority from the proprietor. Property of FCI. Copyright FCI.

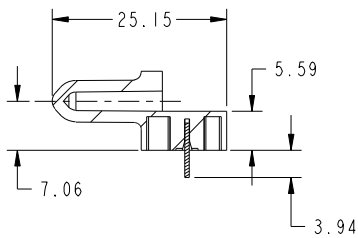
PRODUCT NUMBER
51915-003_-
NOTE: 3



SECTION A-A

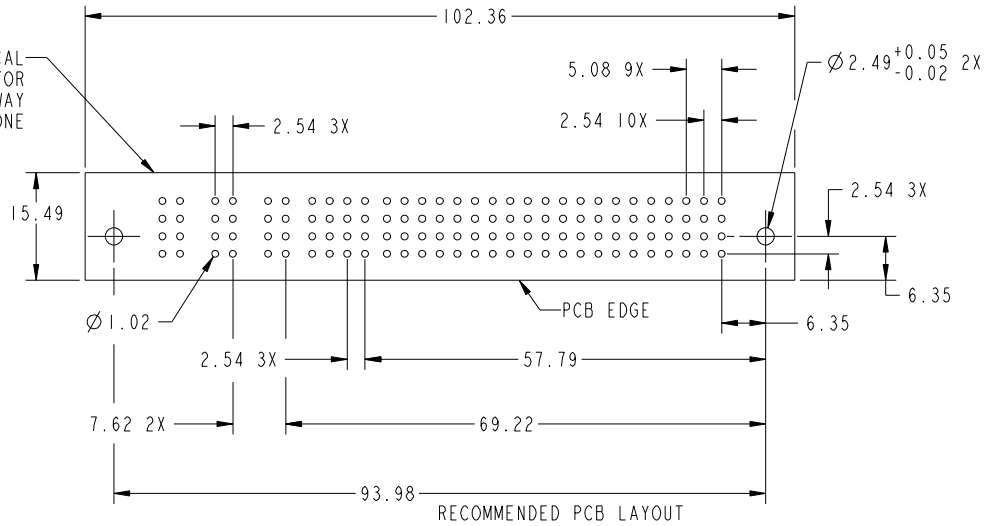


SECTION B-B



SECTION C-C

MECHANICAL CONNECTOR STAY-AWAY ZONE



RECOMMENDED PCB LAYOUT

mat'l code			SEE NOTE		tolerances unless otherwise specified		CUSTOMER		FCI www.fciconnect.com	
ltr	ecn no.	dr	date	linear	0.X ± 0.5		COPY		title	
C					0.XX ± 0.25		projection		10P + 16S + 3ACP RIGHT ANGLE SOLDER RECEPTACLE	
				angles	0.XXX ± 0.10				product family PwrBlade code	
				dr	J. SHAFFER	11/11/01	MIM		size	213
				enr	E. TREECE	11/11/01	← MIM →		dwg no	sheet
				chr	E. TREECE	11/11/01	scale		A	2
				appd	E. TREECE	11/11/01	1:1		51915-003	
sheet index		revision sheet								

cage code 22526

Pro/E

Tous droits strictement reserves. Reproduction ou communication a des tiers interdite sous quelque forme que ce soit sans autorisation écrite du propriétaire. Propriete de c FCI. Droits de reproduction FCI.



All rights strictly reserved. Reproduction or issue to third parties in any form whatever is not permitted without written authority from the proprietor. Property of FCI. Copyright FCI.

PRODUCT NUMBER
51915-003_-
NOTE: 3

CONNECTOR NOTES:

- ① HOUSING MATERIAL: UL 94 V-0 GLASS FILLED HIGH TEMP THERMOPLASTIC
POWER CONTACT MATERIAL: COPPER ALLOY
SIGNAL CONTACT MATERIAL: COPPER ALLOY
 - △ 2. PLATING:
SEE ITEM 5 & 6 IN PRINT 10064183 FOR PLATING SPEC OF 51915-003; 51915-003LF PRESPECTIVELY
 - 3. "MANUFACTURER'S" NAME, P/N, AND DATE CODE TO APPEAR ON THIS SURFACE
 - 4. PRODUCT SPECIFICATION GS-12-149
- PCB NOTES:
- 5. ALL DIMENSIONS ARE BASIC UNLESS OTHERWISE SPECIFIED.
 - 6. ALL THROUGH HOLES ARE LOCATED WITH A TRUE POSITION OF 0.004 [0.10]
 - 7. ALL HOLE DIAMETERS ARE FINISHED HOLE SIZE
 - 8. Ø2.49 THROUGH HOLES ARE UNPLATED.
 - 9. Ø1.151±0.025 DRILLED HOLES PLATED WITH 0.008 MIN SnPb OR Sn OVER 0.03 TO 0.08 Cu PLATING TO ACHIEVE Ø1.02±.07 HOLE.
 - 10. A △SYMBOL WILL BE NEXT TO ANY DIMENSION, VIEW, OR NOTE WHICH HAS BEEN MODIFIED WITH THE CURRENT DRAWING REVISION.
 - △ 11. THE VOID CORING IN BETWEEN POWER MODULES, SIGNAL MODULES AND END MODULES ARE OPTIONAL AND THE SHAPE MAY BE DIFFERENT FOR OPTIMIZING THE MOLDING PROCESS. THE VOID CORING WILL NOT EFFECT TO PRODUCT FUNCTION.

mat'l code		SEE NOTE		tolerances unless otherwise specified		CUSTOMER		www.fciconnect.com	
ltr	ecr no.	dr	date	linear	0.X ±0.5	COPY		title	
C					0.XX ±0.25	projection		10P + 16S + 3ACP RIGHT ANGLE SOLDER RECEPTACLE	
				angles	0.XXX ±0.10			product family PwrBlade code	
				dr	0° ±2°			size	
				enr	J. SHAFFER 11/11/01	scale		dwg no	
				chr	E. TREECE 11/11/01	1:1		51915-003	
				appd	E. TREECE 11/11/01			sheet	
sheet index		revision sheet						3	

cage code 22526

Pro/E