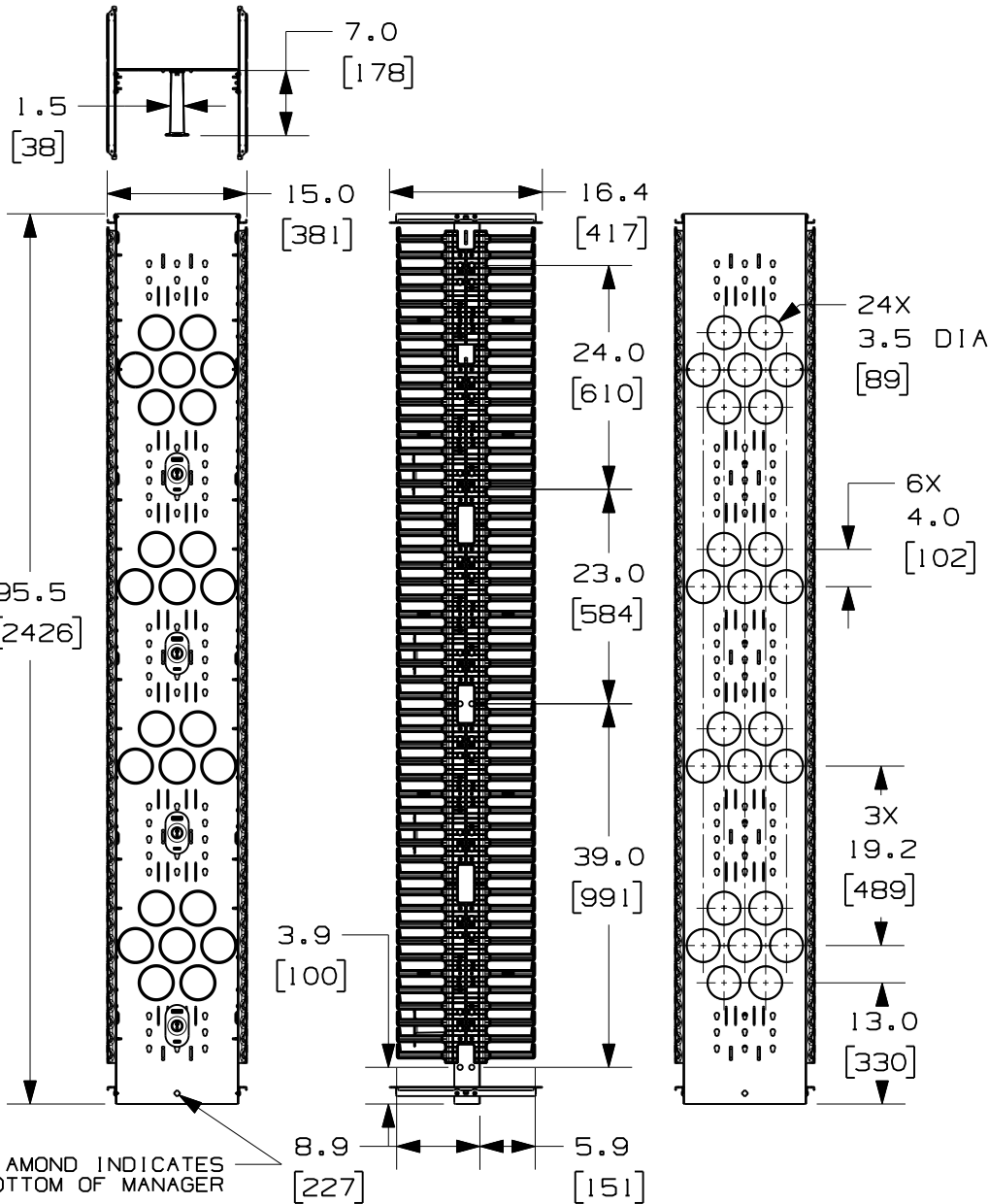


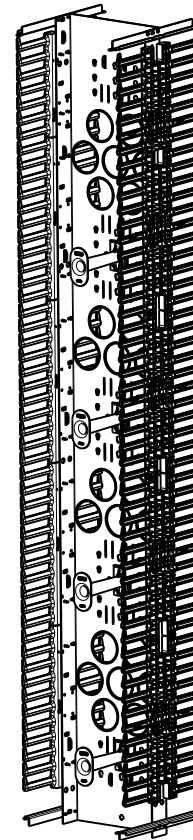
THIS COPY IS PROVIDED ON A RESTRICTED BASIS AND IS NOT TO BE USED IN ANY WAY DETRIMENTAL TO THE INTERESTS OF PANDUIT CORP.



PANDUIT P/N	WEIGHT
PRV1596	50.2 LBS/EACH 22.8 kg/EACH

NOTES:

- VISIT OUR ON-LINE CATALOG AT WWW.PANDUIT.COM FOR A CURRENT LIST OF PRODUCTS APPLICABLE FOR USE WITH THIS PART.
- COMPONENTS: (1) 8 FOOT 15" VERTICAL MANAGER
(1) HARDWARE KIT
(4) MOLDED FRONT SPOOLS (P/N: PRSP7)
- CAN BE USED WITH ANY 19 OR 23 INCH EIA STANDARD RACK.
- 8 FOOT-15" DOOR SOLD SEPARATELY (P/N: PRD1596)
- 5" REAR MOUNTING SPOOLS SOLD SEPARATELY (P/N: PRSP5)
- SPOOLS HAVE MULTIPLE MOUNTING POSITIONS TO ACCOMMODATE CABLE SLACK.
- DIMENSIONS IN PARENTHESES ARE METRIC.
- ALL DIMENSIONS ARE REFERENCE ONLY.



MODEL FILENAME	V10440AF/05.PRT
CAD FILENAME/LAYERS	V10440AF_DC/05A.PRT
PANDUIT CORP. TINLEY PARK, ILLINOIS	
8 FOOT VERTICAL MANAGER 15" FRONT AND REAR (PRV1596) CUSTOMER DRAWING	

REV	DATE	BY	CHK	DESCRIPTION	ECN	R	CUST	SUP	OTH	UNLESS OTHERWISE SPECIFIED, DIMENSIONAL TOLERANCES ARE:	UNLESS OTHERWISE SPECIFIED, ALL DIMENSIONS ARE GIVEN IN INCHES, THIRD ANGLE PROJECTION.	SCALE	DWG NO.	DWG SIZE
05A	10-7-11	BAME		UPDATED VIEWS	10440-21		CMK			DRAWN BY BAME	SCALE NONE	DRAWING NO. 10440-21	A	
04A	1-24-11	BAME	NAGL	REMOVED TOLERANCES CHANGED DOOR BRACKET DESIGN	10440-21		CMK							
01	12-14-07	BAME	NAGL	CHANGED FINGER DESIGN	10440-21		CMK			DATE 6-13-07	BACKBONE - STEEL SPOOLS - POLYCARBONATE FINGERS - ABS	10440-21	A	
00	6-13-07	BAME	NAGL	RELEASED TO PRODUCTION	10440-21		CMK			CHK'D NAGL				