

**Product number FA10307_K2S-RS**

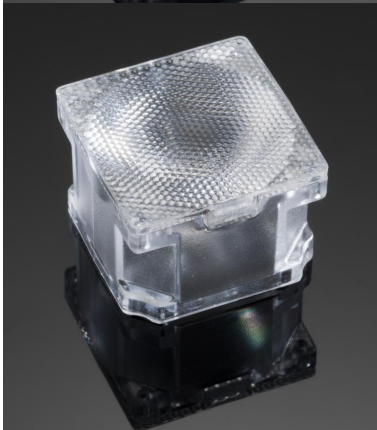
Family	Rose	FWHM	8 degrees
Type	Assembly	Efficiency	-
LED	LUXEON K2	cd/lm	19.000
Color	Clear	Gerber File	Available
Diameter	21.6 + 21.6 mm		
Height	15.6 mm		
Style	Square		
Optic Material	PC		
Holder Material	-		
Fastening	["tape"]		
Status	Production ready		

**Product number FA10329_K2S-SS**

Family	Rose	FWHM	12 degrees
Type	Assembly	Efficiency	-
LED	LUXEON K2	cd/lm	-
Color	Clear	Gerber File	Available
Diameter	21.6 + 21.6 mm		
Height	15.6 mm		
Style	Square		
Optic Material	PC		
Holder Material	-		
Fastening	["tape"]		
Status	Production ready		

**Product number FA10308_K2S-D**

Family	Rose	FWHM	28 degrees
Type	Assembly	Efficiency	-
LED	LUXEON K2	cd/lm	1.950
Color	Clear	Gerber File	Available
Diameter	21.6 + 21.6 mm		
Height	15.6 mm		
Style	Square		
Optic Material	PC		
Holder Material	-		
Fastening	["tape"]		
Status	Production ready		

**Product number FA10309_K2S-M**

Family	Rose	FWHM	30 degrees
Type	Assembly	Efficiency	-
LED	LUXEON K2	cd/lm	1.440
Color	Clear	Gerber File	Available
Diameter	21.6 + 21.6 mm		
Height	15.6 mm		
Style	Square		
Optic Material	PC		
Holder Material	-		
Fastening	["tape"]		
Status	Production ready		

PRODUCT DATASHEET

Rose series

last update 8/12/2016

**Product number FA10323_K2S-W**

Family	Rose	FWHM	40 degrees
Type	Assembly	Efficiency	-
LED	LUXEON K2	cd/lm	0.550
Color	Clear	Gerber File	Available
Diameter	21.6 + 21.6 mm		
Height	15.6 mm		
Style	Square		
Optic Material	PC		
Holder Material	-		
Fastening	["tape"]		
Status	Production ready		

**Product number FA10310_K2S-O**

Family	Rose	FWHM	44+20 degrees
Type	Assembly	Efficiency	-
LED	LUXEON K2	cd/lm	1.370
Color	Clear	Gerber File	Available
Diameter	21.6 + 21.6 mm		
Height	15.6 mm		
Style	Square		
Optic Material	PC		
Holder Material	-		
Fastening	["tape"]		
Status	Production ready		

NOTE: The typical divergence will be changed by different color, chip size and chip position tolerance. The typical total divergence is the full angle measured where the luminous intensity is half of the peak value.



PRODUCT DATASHEET

Rose series

last update 8/12/2016

GENERAL INFORMATION

- Product series especially designed & optimized for LUXEON K2 series of LEDs.
- Special care taken to make light distribution as uniform as possible.
- Lens material optical grade PC with high UV and temperature resistance (120 degrees of Celcius / 248 degrees of Fahrenheit). Allows use of high current and temperature conditions.

Please find more information about used materials from below:

http://ledil.fi/sites/default/files/Documents/Technical/Material/PC%20Makrolon%202400_2407_2456_2458-UL.pdf